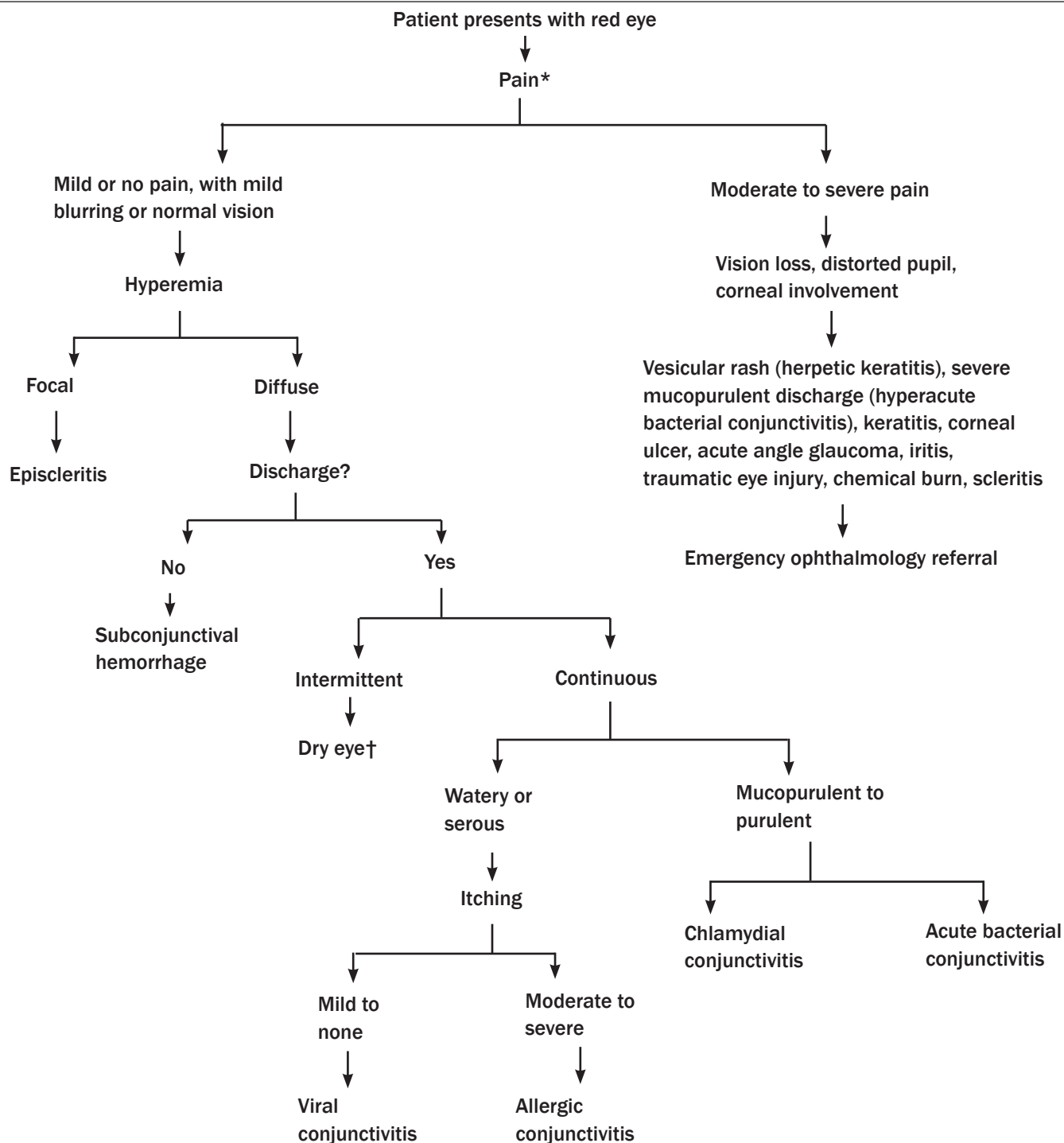


Figure 1. Differential Diagnosis of the Red Eye



Note: Blepharitis, hordeolum, and chalazion are associated with a localized red, swollen, tender eyelid; other symptoms are rare.

* Patients with corneal abrasion may present with severe pain, but can be treated by a primary care physician.

† Paradoxical tearing of the eye

Reprinted with permission from: Cronau H, Kankanala RR, Mauger T. Diagnosis and management of red eye in primary care. *Am Fam Physician* 2010;81:137-144.