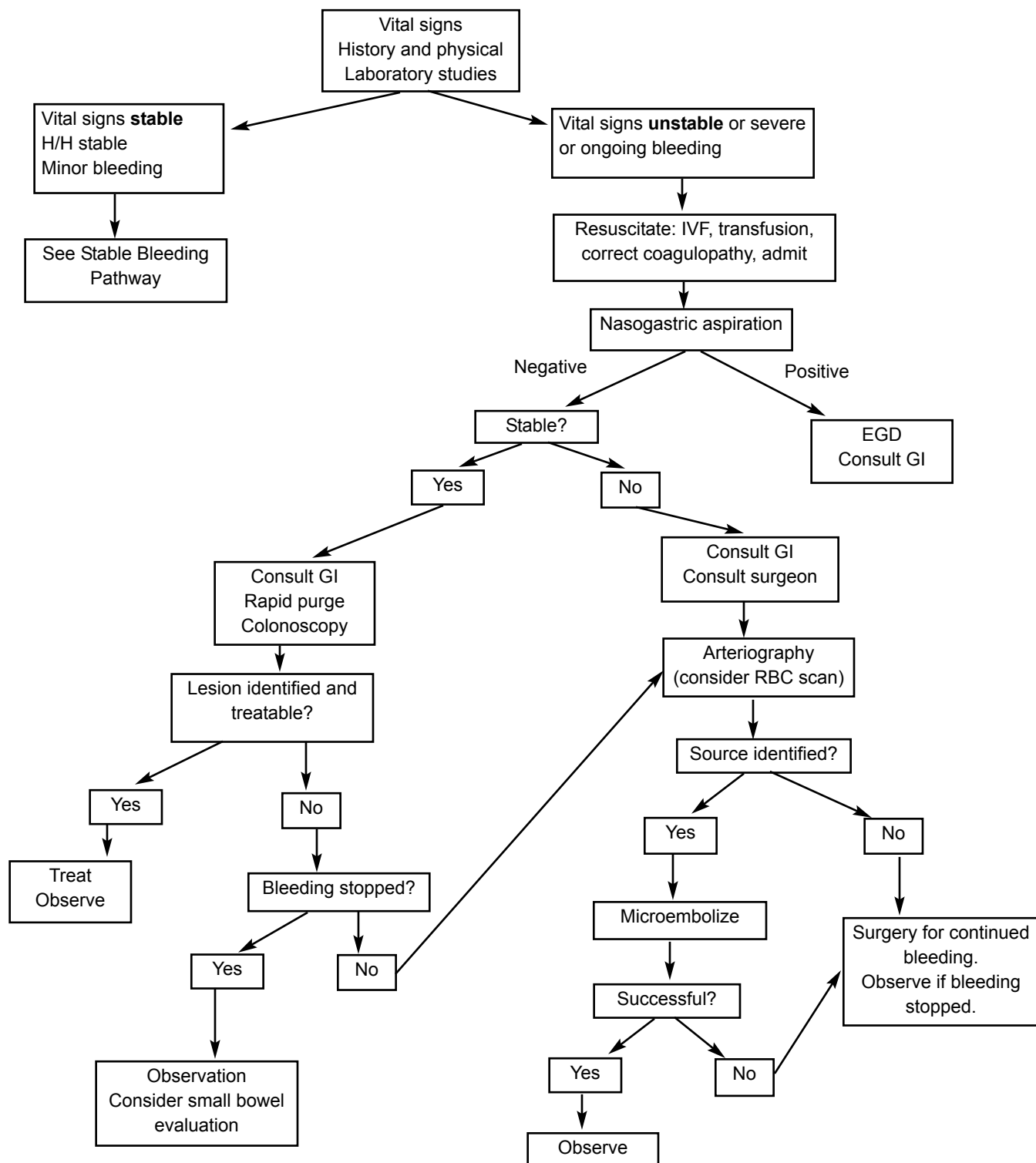


**Figure 3B. Algorithm for Acute Unstable, Severe, or Ongoing Lower Gastrointestinal Bleeding**



Abbreviations: VS = vital signs; H/H = hemoglobin/hematocrit; IVF = intravenous fluids; EGD = Esophagogastroduodenoscopy; GI = gastroenterologist; RBC = red blood cell

for rebleeding. Most physicians also admit a patient with ongoing bleeding to the ICU. Patients who fall in between these criteria can be admitted to either an ICU or step-down/intermediate care bed, depending on hospital and individual patient factors.

When a patient with minor bleeding is being discharged home, it is important to be sure the patient understands the signs and symptoms of severe bleeding and has access to transportation to return to the ED if necessary. The side effects of any med-