

Figure 16. Small Bowel Obstruction



Multiple dilated loops of small bowel are filled with fluid and oral contrast material. The colon is collapsed.

Figure 17. Infraarenal Abdominal Aortic Aneurysm with Contained Retroperitoneal Leak



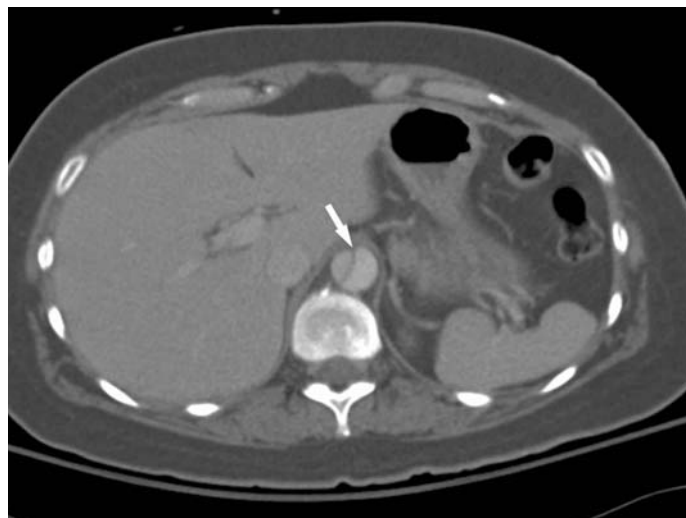
Note extensive anterior displacement of the left kidney, as well as mural thrombus within the aortic lumen.

Figure 18. Ruptured Abdominal Aortic Aneurysm



Note aortic lumen (asterisk) and retroperitoneal hemorrhage (arrows).

Figure 19. Aortic Dissection



Note intimal flap separating the true and false lumens (arrow).