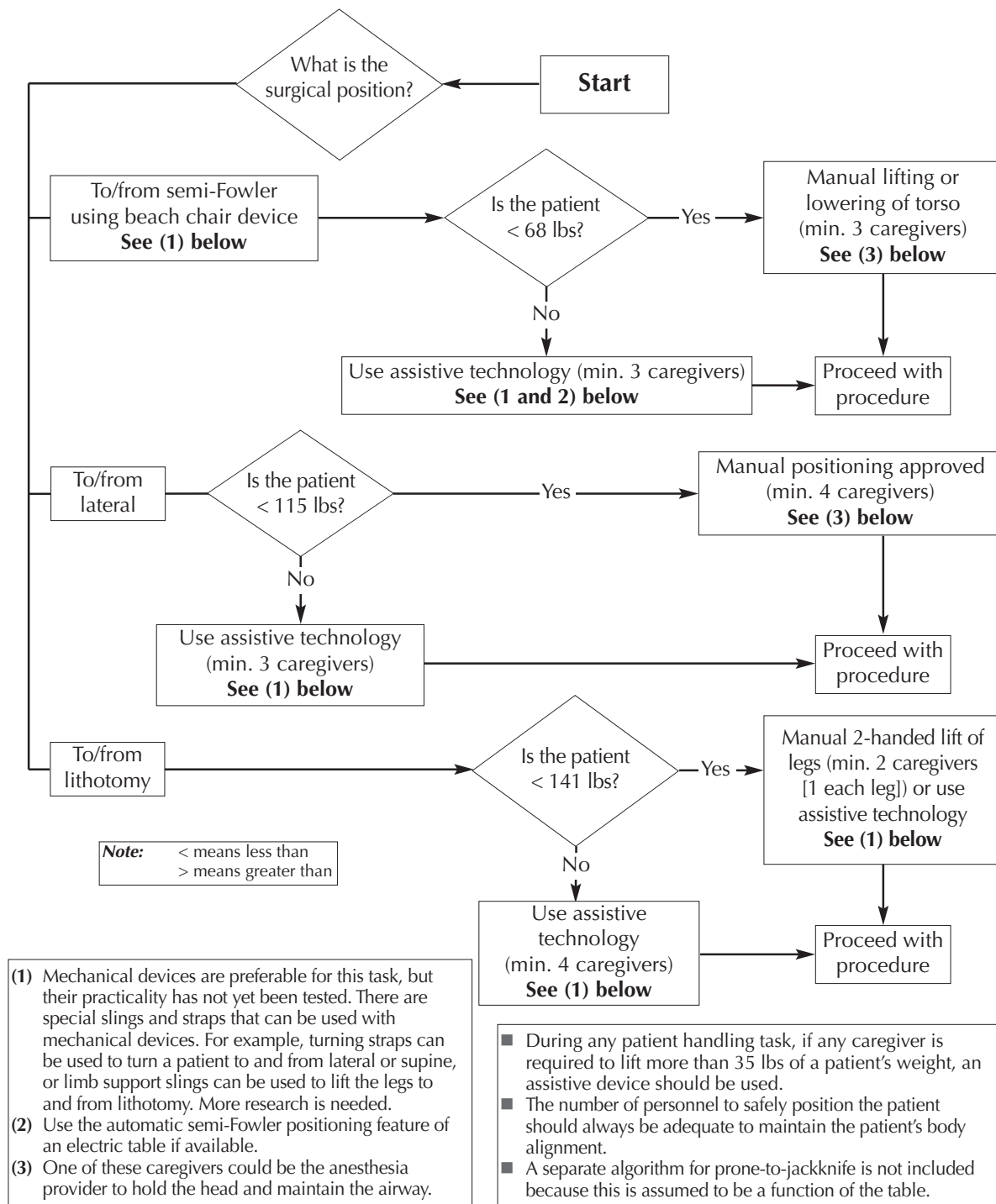


## Ergonomic Tool #2

### POSITIONING/REPOSITIONING THE PATIENT ON THE OR BED INTO AND FROM THE SUPINE POSITION



Used with permission from AORN Guidance Statement: Safe Patient Handling and Movement in the Perioperative Setting, 2007, p 16. Copyright © AORN, Inc., 2170 South Parker Road, Suite 300, Denver, CO 80231. All rights reserved.