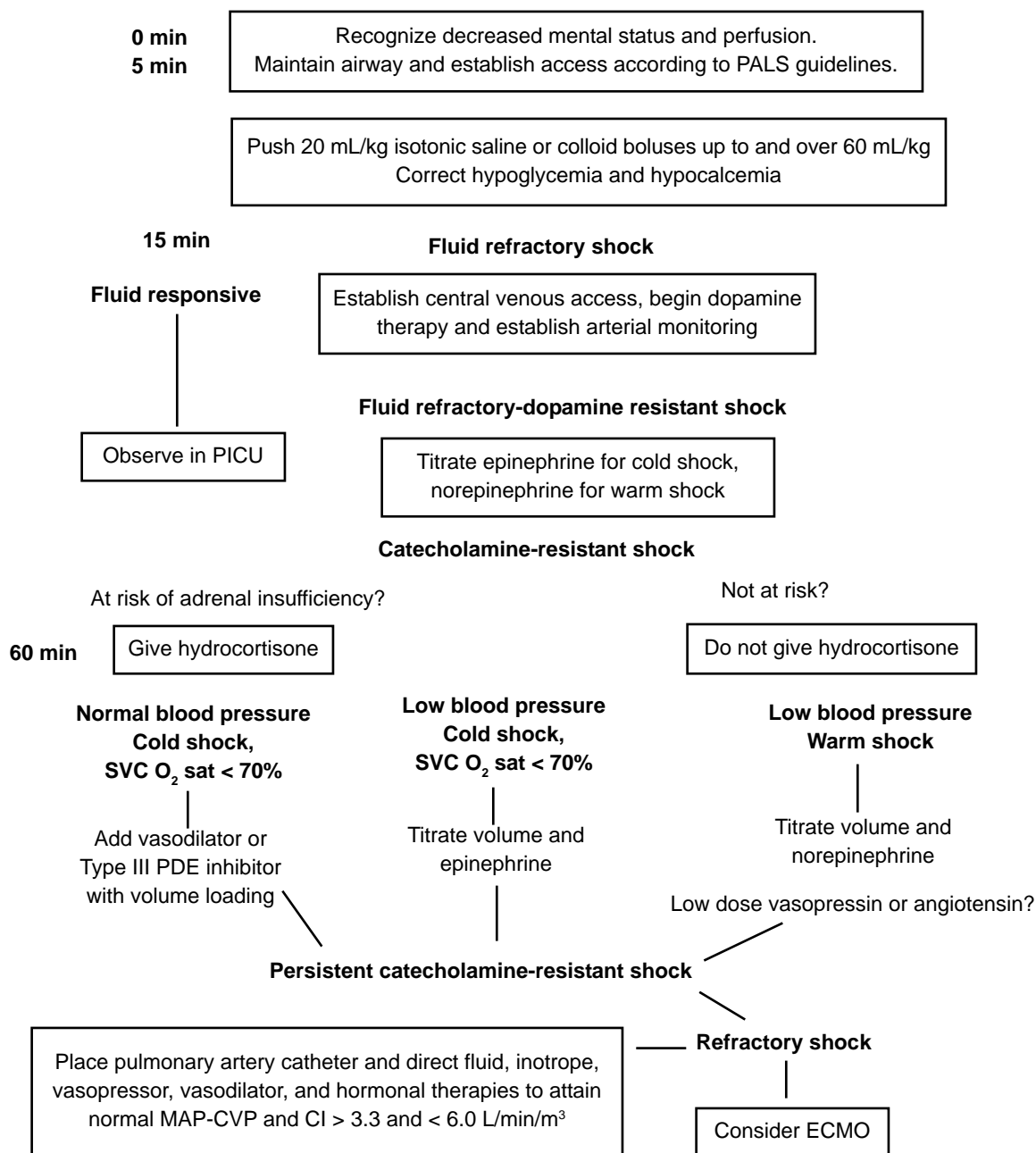


**Figure 1. Recommendations for Stepwise Management of Hemodynamic Support in Infants and Children**



Recommendations for stepwise management of hemodynamic support in infants and children with goals of normal perfusion pressure (mean arterial pressure–central venous pressure [MAP–CVP]). Proceed to next step if shock persists. *PALS*, pediatric advanced life support; *PICU*, pediatric intensive care unit; *SVC O<sub>2</sub>*, superior vena cava oxygen; *PDE*, phosphodiesterase; *CI*, cardiac index; *ECMO*, extracorporeal membrane oxygenation.

Adapted with permission from: Carcillo J, Fields A. Clinical practice parameters for hemodynamic support of pediatric and neonatal patients in septic shock. *Crit Care Med* 2002;30:1365-1378.